

THE PINNACLE GLOBAL SCHOOL, NEEMUCH



The first News Letter

POTPOURRI

Vol.1, Ed.1



THE PINNACLE GLOBAL SCHOOL

A CBSE CURRICULUM SCHOOL



WWW.thepinnacleglobalschool.com

JAWAD ROAD, BHADBHADIYA VILLAGE, NEEMUCH, M.P.-458441

Session
2021-22

Tel: +91 9179 566035, 9179 656035

FROM THE DESK OF
DIRECTORS

PRINCIPAL'S DESK

STAFF DETAILS

CREATIVITY CORNER

SELF CREATED
RHYMES/STORY

PUZZLE

ACADEMIC ACTIVITIES

CO - CURRICULAR
ACTIVITIES

Follow Us:





Mr. Sanjay Gupta
Chairman
MBBS MS (General Surgery)



Vision

***To promote National and Global integration with knowledge and skill provided with multi - disciplinary learning opportunities.**

***Develop a confident understanding of one's role in an international society by fostering values of honesty, teamwork, leadership, sensitivity and social responsibility.**

***Empowered with values to contribute towards Global Peace.**

Mission

Our aim is to create a world class education that nurtures a culture of excellence that inspires intellectual competitive, holistic development, spirit of enterprise, critical inquiry and lifelong learning skills with a sound character in a learner center environment which will help them to be a global citizen and to meet the challenges of the future.

***Develop a confident understanding of one's role in an international society by fostering values of honesty, teamwork, leadership, sensitivity and social responsibility.**

***Empowered with values to contribute towards Global Peace.**



Ms. Sujata Gupta
Director

MBBS DGO (Gynaecologist)

It has been my heartfelt desire to provide the highest quality of education to the students community in the Neemuch. True education is the spring board for achieving higher goals.

The aim at TPGS is to provide excellence in education to empower young minds with creative and imaginative learning and with traditions of following true Indian ethos and values. We believe the curriculum at the school with a global dimension is central to the enrichment of children to face the challenges of 21st century with confidence and character.

I am confident that the school will provide stress - free, cognitive and happy learning to the students at The Pinnacle Global School.





Ms. Ashmi Jain Principal

Dear Parents,

Child centric, value based, Experiential learning, with effective communication brings a positive change that leads to the betterment of society fostering a win situation.

Child in today's world, one of the challenges that a parent faces is to mould their child to the changing requirements of the environment. Part of the same challenge is also for a good school.

TPGS Neemuch has all the necessary infrastructure and facilities to provide overall development for the students.

It has a strong support system of 15 staff, well trained qualified and experienced faculty members who can guide and facilitate the academic requirement of the students.

To bring out the best in each child and multiply their strength is the primary objective of the school. Our teaching is based on integration of subject with the usage of smart technology. We also follow the new education policy with emphasis on experiential learning rather than rote learning.

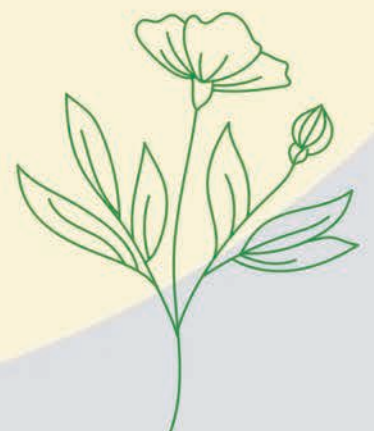
**Thanking you
for your trust in us
Ms. Ashmi Jain**



STAFF DETAIL



1. Ms. Ashmi Jain (Principal) -
M.Sc. (Chem) M.Lib., P.Sc., M.Ed
2. Ms. D. V. Jayshree (TGT Mathematics) -
M.Sc. (Mathematics), B.Ed.
3. Ms. Charu Choudhary (PRT) - B.A., B.Ed.
4. Ms. Surabhi Shrivastava (TGT Computer Science) -
B.Tech., B.Ed.
5. Ms. Tasneem Haider (NTT Co-ordinator) -
B.Com., B.Ed.
6. Mr. Amit Katariya (PGT Physical Education) -
B.A., B.PEd., M.PED.
7. Ms. Nafeesa Rassiwalla (FDM) - B.Com., M.B.A.
8. Ms. Gail Dsena (NTT) - B.A., M.A. (English Lit.)
9. Ms. Deepa Rustagi (NTT) - B.A. NTT
10. Ms. Raksha Yadav (TGT English) -
M.A. (Eng. Lt.), B.Ed.
11. Ms. Masooma H. Dairkee (PGT Chemistry) -
M.Sc. (Chemistry), B.Ed., L.Lb.
12. Ms. Simran Kaur (PRT Science) -
M.Sc. (Physics), B.Ed.



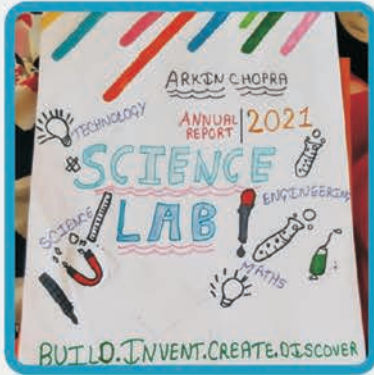


Creativity Corner





Academic Activities





Co - curricular Activities

